

Beta Reader Reference Sheets



Guided Questions to Help Your Beta Readers

BY
JENIFER RUTH

COPYRIGHT

Copyright © 2022 by Jenifer Ruth All rights reserved.

You are welcome to print a copy of this document for your personal use. Other than that, no part of this publication may be reproduced, stored, or transmitted in any form or by any means, electronic, mechanical, photocopying, recording, scanning, or otherwise, except as permitted under Section 107 or 108 of the 1976 United States Copyright Act, without the prior written permission of the author. Requests to the author and publisher for permission should be addressed to the following email: jenifer@writersbounty.com

Limitation of liability/disclaimer of warranty: While the publisher and author have used their best efforts in preparing this guide, they make no representations or warranties with respect to the accuracy or completeness of the contents of this document and specifically disclaim any implied warranties of merchantability or fitness for particular purpose. No warranty may be created or extended by sales representatives, promoters, or written sales materials.

The advice and strategies contained herein may not be suitable for your situation. You should consult with a professional where appropriate. Neither the publisher nor author shall be liable for any loss of profit or any other commercial damages, including but not limited to special, incidental, consequential, or other damages.

Due to the dynamic nature of the Internet, certain links and website information contained in this publication may have changed. The author and publisher make no representations to the current accuracy of the web information shared.

TABLE OF CONTENTS

Use sheets separately or all together for a single reader. The side area is lined on each sheet for your reader to make notes. Using these sheets as a reference to discuss your story with your reader would be best.

Before Reading and First Five Pages	page 4
Main Character	page 5
Minor Characters	page 6
Antagonist	page 7
Plot	page 8
Climax	page 10
After Reading	page 11



Beta Reader Reference



Before You Begin Reading...

Is the title interesting? From the title alone, what impressions do you have of the story?

Handwritten response area with a blue arrow pointing left and a purple dot on the left side.



As you read, please mark any place that you put the story down with a brief description of why you stopped there.

The First Five Pages

- At what point did the story grab you?
- Was the first sentence gripping, or can you suggest an improvement?
- Were the setting and main character clear? Did it grab your attention?
- Were the descriptions vivid and the dialogue believable?
- Did anything in the first pages distract you from the story?

Large blue notepad area with a hole-punch top and horizontal lines for writing.



Thank you





Beta Reader Reference



Main Character Questions

- Did the MC seem like a real person to you?
- Was there anything unbelievable about the MC's personality or motivation?
- Did the MC seem too perfect anywhere?
- Did the MC's relationship to other characters seem believable, or were any relationships problematic?
- What did you like the most and least about the MC?
- Is there anything I should consider adding or changing about the MC?

A large light blue rectangular area with a white border on the left side, containing 15 horizontal black lines for writing.



Thank you





Beta Reader Reference



Minor Character Questions

- Were the minor characters described well?
- Did any essential minor character seem two-dimensional or in need of more development?
- Did dialogue between characters seem believable? Were there any areas where the dialogue flowed unnaturally?
- Did any character rub you the wrong way or annoy you? Why? Should that be changed, or does it work?

A large light blue rectangular area with a white border on the left side, containing 15 horizontal black lines for writing.



Thank you





Beta Reader Reference



Antagonist Questions

- Was the antagonist believable?
- Was the antagonist's motivation clear and relatable?
- Were the antagonist's actions ever unbelievable, i.e., too evil or too kind?
- Did the antagonist come off as cliché? Why or why not?
- Did the relationship between the MC and antagonist make sense, or did something stick out as unrealistic?
- Do the antagonist's actions seem realistic considering the motivation of the character?

A large light blue rectangular area with a white border on the left side, containing ten horizontal black lines for writing.



Thank you





Beta Reader Reference



Plot Questions Page 1



As you read, please make note of any place where the story seems to drag and why you believe it's lagging.

- Did any part seem overly simplistic, confusing, or annoying to you?
- Did you find any inconsistencies in the plot or characters?
- Did any event seem far-fetched to you?
- Was there too much or not enough description?
- Were descriptions vivid enough, or did they need more sensory details (sounds, smells, etc.)
- Was the conflict enough, or was more tension needed? Was the central conflict believable and sufficient to support the story?
- Did you notice any glaring errors in the action?

A large light blue rectangular area with a white border on the left side, containing ten horizontal black lines for writing.



Thank you





Beta Reader Reference



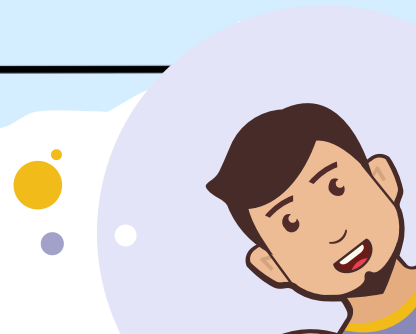
Plot Questions Page 2

- Were there any scenes that you felt were unnecessary to the story as a whole?
- What part was your favorite? Why?
- What part was your least favorite? Why?
- Did any part seem redundant?
- What were the places that you skimmed through?
- What were the places where you couldn't put the story down?
- Were any scenes too predictable? Why?

A large light blue rectangular area with a white border on the left side, containing 12 horizontal black lines for writing.



Thank you





Beta Reader Reference



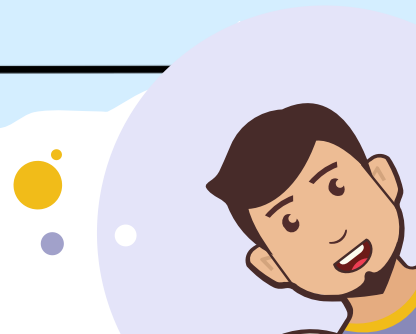
Climax Questions

- Did the ending fit, or did it seem contrived/too easy?
- Were you satisfied with the climax, or did you feel let down?
- Did the tension building up to the climax fit the finale?
- Did the climax pass too quickly or too slowly?
- Were there any loose ends left (unintentionally, of course)?
- Any suggestions for improvement?

A large light blue rectangular area with a scalloped bottom edge, containing ten horizontal black lines for writing. On the left side of this area, there are ten small white square checkboxes, each aligned with one of the horizontal lines.



Thank you





Beta Reader Reference



After You Finish

Overall, did you enjoy the story? Why or why not?

Handwritten response area with a blue arrow-shaped box and four horizontal lines.

- Was there ever a place where you lost interest? Where?
- What are the strengths and weaknesses of the story?
- Were there any places with too much description? Were there any scenes that felt like an info dump?
- Any final suggestions?

Large lined writing area with a blue header and ten horizontal lines.



Thank you

